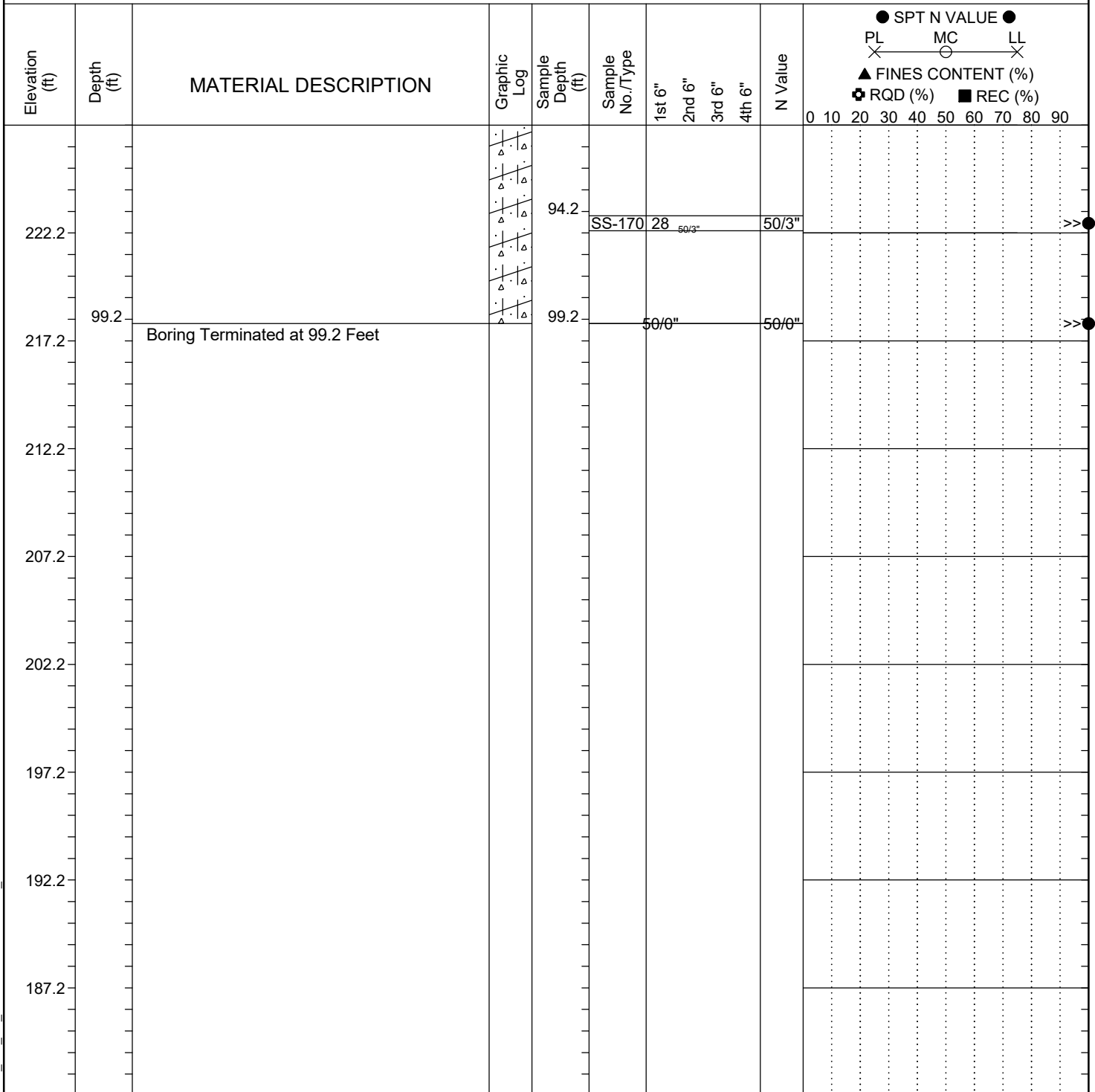


Project ID:	P039719	County:	Richland	Boring No.:	G-128
Site Description:	Carolina Crossroads Phase 2 - Bridge 42B			Route:	Broad River Rd.
Eng./Geo.:	M. Stanbury	Boring Location:	204+30	Offset:	100 LT
Elev.:	317.2 ft	Latitude:	34.03980564	Longitude:	-81.09347298
Total Depth:	99.2 ft	Soil Depth:	99.2 ft	Date Started:	2/21/2022
Core Depth:	N/A ft	Date Completed:	2/21/2022		
Bore Hole Diameter (in):	2.25	Sampler Configuration		Liner Required:	Y (N)
Drill Machine:	D-50 #439	Drill Method:	RW	Hammer Type:	Automatic
Core Size:	N/A	Driller:	R. Cassell	Energy Ratio:	90.8%
		Groundwater:	TOB	24HR	29.9 ft


LEGEND

SAMPLER TYPE		DRILLING METHOD	
SS - Split Spoon	NQ - Rock Core, 1-7/8"	HSA - Hollow Stem Auger	RW - Rotary Wash
UD - Undisturbed Sample	CU - Cuttings	CFA - Continuous Flight Augers	RC - Rock Core
AWG - Rock Core, 1-1/8"	CT - Continuous Tube	DC - Driving Casing	